



PRECISION AND RELIABILITY

LASERTECH[®]

— industrial laser pointers —

LASERTECH - Precision. Reliability. Innovation.

LASERTECH, a brand of the long-standing company AGNOLIN&BRUSADIN SRL, has specialised in creating laser pointers for industrial and professional use for over thirty years.

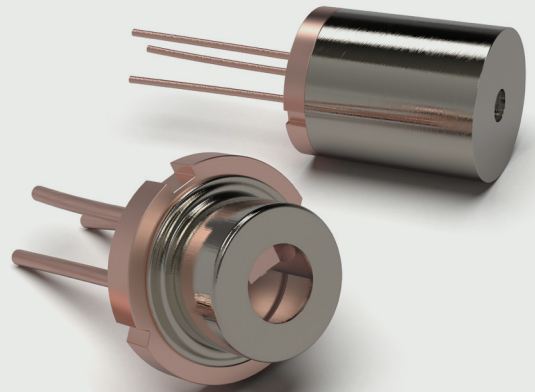
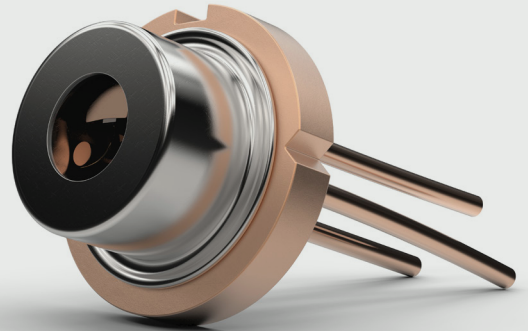
We produce high-tech laser devices and systems that enable the display of increasingly precise references for the operator: aligning, positioning, cutting, drilling, zeroing margins of error, saving on materials and time, and achieving superior performance and maximum productivity.

We work in an array of sectors: wood, marble, plastic, rubber, paper, glass working, automotive, industrial automation, food, logistics, biomedical, packaging, road marking machinery, rail industry.

Our **constantly updated team of technicians** provides the customer with the best and most advanced technologies available on the market, making our products competitive and reliable.

Broad range of projection types:

lines, crosses, points, circles, grids, red or green light, adjustable or fixed focus, perfectly visible on all surfaces.



Dynamic and versatile, we guarantee a rapid response to customer requests, a very short order lead time as well as the ability to supply special products for custom applications.



In all industrial applications, the possibility of having precise references provided by laser pointers is essential. Lines, crosses, points, circles, grids, red or green light, adjustable or fixed focus, perfectly visible on all surfaces and in all settings.

MANY SECTORS OF APPLICATION:

AUTOMOTIVE

In any kind of vehicle manufacturing, laser projectors are used to position assembly elements and for dimensional and quality control of components. They can also be mounted on tyre balancing equipment, tyre changers and headlamp centring machines.



WOOD INDUSTRY

Widely used on woodcutting machinery: lasers are mounted on log saws, circular saws, multi-blade saws, band saws, cutting machines, panel saws, flanging machines and presses. Alignment is possible because the light beam produced by the laser allows the limit of the machining process (e.g. the cutting of a blade) to be traced. Laser markers are generally installed on a bracket, aligning the beam with the disk and fastened integral to the bridge of the machine so that the beam moves when the bridge (usually the machine's Y-axis) is moved.



METAL INDUSTRY, ENGINEERING, ROBOTICS

In the metalworking sector, lasers are a precious and versatile tool for speeding up working processes. They project target positions for visual/actual comparison or to visualise the optimal alignment of workpieces (even large and difficult to manoeuvre workpieces) for saws, folding tables or rollers, milling machines, drilling machines, press brakes, croppers. Using laser projectors in this sector cuts down on production costs and at the same time ensures a higher quality finished product.



MARBLE AND STONE WORKING MACHINERY

Our laser pointers are used for aligning marble slabs on CNC bridge saws or multi-blade saws, positioning suction cups or clamping devices, aligning slabs on table tops or machining centres as well as for edge grinding, positioning cuts and holes.



RAIL SECTOR

Laser pointers are used by rail network maintenance companies, both for structural checks and for checking track alignment.



TEXTILE, LEATHER AND FOOTWEAR SECTOR

In the textile, leather and footwear sector too, our laser modules are essential for providing a precise reference for the operator in garment or leather manufacturing processes (positioning the fabric as it enters the machine, as an optical ruler for seam monitoring, reference for applying embellishments, applying labels, printing on fabric, positioning buttonholes and buttons, cutting fabric or leather, aligning and sewing pockets, alignment in the ironing process).



LOGISTICS

Lasers projecting crosses, lines and circles form guiding systems on moving conveyor belts for positioning packages and boxes or any other goods being handled. They can also be applied to automated vertical warehouses, allowing the operator to be guided in recognising the material to be picked, with a not inconsiderable return in terms of time and productivity.



FOOD INDUSTRY PRODUCTION LINES

Laser pointers are used to process (i.e. align or select) bulk or packaged food products in the horizontal or inclined handling process as they exit machines during the various production stages, in both packaging or distribution: Automatic bottling, filling, capping, thermo-sealing plants.



PAPER, RUBBER, PLASTIC, PACKAGING INDUSTRY

Laser pointers mounted on machinery for plastic production and cutting (production of plastic films for packaging products in the food, medical and pet food sectors), or eco-sustainable packaging. Automatic wrapping machines, cutters, rewinders.



BIOMEDICAL SECTOR

Laser pointers are mounted on the majority of diagnostic machines: tomography, CT, radiotherapy, orthopantomography; they are essential for aligning the patient or parts of the body during the session.



PRINTING MACHINES

Laser references are mounted on gluing plotters, offset printing machines, cutters, folding machines, laminators, die-cutters, flexographic machines.



VISION LASERS

The laser display is ideal for 2D and 3D measurements in combination with industrial cameras and image processing.



GLASS CUTTERS AND ENGRAVERS

Glass working requires careful and precise positioning and careful checking of dimensions: we have been working for many years with the major glass working machine manufacturers in Italy and Europe. Used on glass cutting machines, including waterjet, sanding and drilling machines.



LINE MARKING MACHINERY

Our laser pointers are mounted on line marking machines for marking roads and motorways, car parks, airports, sports fields.



WATERJET CUTTING MACHINERY

Laser pointers are used as a reference on waterjet cutters to cut a wide variety of materials with a high level of precision and with no issues created by the humid environment.



GLUE IMPREGNATION AND COATING LINES

Laser pointers are mounted on glue impregnation and coating lines for a number of sectors: from furniture to building and construction.



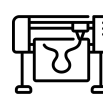
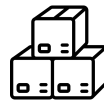
Series LT1S20



Compact and powerful red light emitter for marking cutting lines and many other optical projections

Ø20 mm laser module for industrial use. Designed for multi-blade woodworking machines, paper and textile cutters, for positioning and aligning plastic, rubber etc. workpieces in production lines, as well as for marking cutting lines or as an image processing aid. Its red light beam can be combined with a wide range of optics generating points, lines, circles, crosses and other figures to meet every requirement. Available with various power supplies and trigger control.

Our lasers are suitable for every application sector.



Laser beam emitter LT1S20 series



Type of projection: Dot

Supply voltage: 5 Vdc

Connection: Cable 2x0,25 cm 200

Light source: Laser diode

Casing: Green anod.alum.

Dimension: 20x130 mm

Protection class: IP67

Storage temperature °C/°F: -40 +85 °C / -40 +185 °F

Operating temperature °C/°F: -10 +50 °C / 14 +122 °F

Code	Wavelength	Max output power	Operating current	Laser class
M4301A2V00	635 nm (bright red)	1 mW	<40 mA	2
M4303A2V00	635 nm (bright red)	3 mW	<40 mA	3R
M4305A2V00	635 nm (bright red)	5 mW	<40 mA	3R
M4310A2V00	635 nm (bright red)	10 mW	<70 mA	3B
M4315A2V00	635 nm (bright red)	15 mW	<90 mA	3B
M4320A2V00	635 nm (bright red)	20 mW	<90 mA	3B
M4330A2V00	635 nm (bright red)	30 mW	<120 mA	3B
M4501A2V00	650 nm (red)	1 mW	<40 mA	2
M4503A2V00	650 nm (red)	3 mW	<40 mA	3R
M4505A2V00	650 nm (red)	5 mW	<40 mA	3R
M4701A2V00	670 nm (dark red)	1 mW	<50 mA	2
M4703A2V00	670 nm (dark red)	3 mW	<60 mA	3R
M4705A2V00	670 nm (dark red)	5 mW	<65 mA	3R

The lasers comply with the CEI EN 60825-1 standard, CEI 76-2 classification.

Note

For better use you have to specify the focus distance. If not specified, emitter is focused for mm 2000 .Other optical projections available on request

Laser beam emitter LT1S20 series



Type of projection: Dot

Supply voltage: 5 Vdc

Connection: M12 connector + cm 500 cable

Light source: Laser diode

Casing: Green anod.alum.

Dimension: 20x145 mm

Protection class: IP67

Storage temperature °C/°F: -40 +85 °C / -40 +185 °F

Operating temperature °C/°F: -10 +50 °C / 14 +122 °F

Code	Wavelength	Max output power	Operating current	Laser class
M4301A4V00	635 nm (bright red)	1 mW	<40 mA	2
M4303A4V00	635 nm (bright red)	3 mW	<40 mA	3R
M4305A4V00	635 nm (bright red)	5 mW	<40 mA	3R
M4310A4V00	635 nm (bright red)	10 mW	<70 mA	3B
M4315A4V00	635 nm (bright red)	15 mW	<90 mA	3B
M4320A4V00	635 nm (bright red)	20 mW	<90 mA	3B
M4330A4V00	635 nm (bright red)	30 mW	<120 mA	3B
M4501A4V00	650 nm (red)	1 mW	<40 mA	2
M4503A4V00	650 nm (red)	3 mW	<40 mA	3R
M4505A4V00	650 nm (red)	5 mW	<40 mA	3R
M4701A4V00	670 nm (dark red)	1 mW	<50 mA	2
M4703A4V00	670 nm (dark red)	3 mW	<60 mA	3R
M4705A4V00	670 nm (dark red)	5 mW	<65 mA	3R

The lasers comply with the CEI EN 60825-1 standard, CEI 76-2 classification.

Note

For better use you have to specify the focus distance. If not specified, emitter is focused for mm 2000 .Other optical projections available on request

Laser beam emitter LT1S20 series



Type of projection: Dot

Supply voltage: 9-36 Vdc 10-30 Vac Trigger 5-30Vdc

Connection: M12 connector + cm 500 cable

Light source: Laser diode

Casing: Green anod.alum.

Dimension: 20x145 mm

Protection class: IP67

Storage temperature °C/°F: -40 +85 °C / -40 +185 °F

Operating temperature °C/°F: -10 +50 °C / 14 +122 °F

Code	Wavelength	Max output power	Operating current	Laser class
M4301L4V00	635 nm (bright red)	1 mW	<40 mA	2
M4303L4V00	635 nm (bright red)	3 mW	<40 mA	3R
M4305L4V00	635 nm (bright red)	5 mW	<30 mA	3R
M4310L4V00	635 nm (bright red)	10 mW	<60 mA	3B
M4315L4V00	635 nm (bright red)	15 mW	<80 mA	3B
M4320L4V00	635 nm (bright red)	20 mW	<80 mA	3B
M4330L4V00	635 nm (bright red)	30 mW	<110 mA	3B
M4340L4V00	635 nm (bright red)	40 mW	<110 mA	3B
M4350L4V00	635 nm (bright red)	50 mW	<120 mA	3B
M4601L4V00	660 nm (red)	1 mW	<30 mA	2
M4603L4V00	660 nm (red)	3 mW	<30 mA	3R
M4605L4V00	660 nm (red)	5 mW	<40 mA	3R
M4610L4V00	660 nm (red)	10 mW	<40 mA	2M
M4620L4V00	660 nm (red)	20 mW	<50 mA	2M
M4630L4V00	660 nm (red)	30 mW	<50 mA	2M
M4640L4V00	660 nm (red)	40 mW	<60 mA	3B
M4650L4V00	660 nm (red)	50 mW	<60 mA	3B
M4680L4V00	660 nm (red)	80 mW	<70 mA	3B

The lasers comply with the CEI EN 60825-1 standard, CEI 76-2 classification.

Note

For better use you have to specify the focus distance. If not specified, emitter is focused for mm 2000 .Other optical projections available on request

Laser beam emitter LT1S20 series



Type of projection: Dot

Supply voltage: 9-36 Vdc 10-30 Vac

Connection: M12 connector + cm 500 cable

Light source: Laser diode

Casing: Green anod.alum.

Dimension: 20x145 mm

Protection class: IP67

Storage temperature °C/°F: -40 +85 °C / -40 +185 °F

Operating temperature °C/°F: -10 +50 °C / 14 +122 °F

Code	Wavelength	Max output power	Operating current	Laser class
M4301B4V00	635 nm (bright red)	1 mW	<30 mA	2
M4303B4V00	635 nm (bright red)	3 mW	<30 mA	3R
M4305B4V00	635 nm (bright red)	5 mW	<30 mA	3R
M4310B4V00	635 nm (bright red)	10 mW	<60 mA	3B
M4315B4V00	635 nm (bright red)	15 mW	<80 mA	3B
M4320B4V00	635 nm (bright red)	20 mW	<80 mA	3B
M4330B4V00	635 nm (bright red)	30 mW	<110 mA	3B
M4501B4V00	650 nm (red)	1 mW	<30 mA	2
M4503B4V00	650 nm (red)	3 mW	<30 mA	3R
M4505B4V00	650 nm (red)	5 mW	<30 mA	3R
M4601B4V00	660 nm (red)	1 mW	<30 mA	2
M4603B4V00	660 nm (red)	3 mW	<30 mA	3R
M4605B4V00	660 nm (red)	5 mW	<40 mA	3R
M4610B4V00	660 nm (red)	10 mW	<40 mA	2M
M4620B4V00	660 nm (red)	20 mW	<50 mA	2M
M4630B4V00	660 nm (red)	30 mW	<50 mA	2M
M4640B4V00	660 nm (red)	40 mW	<60 mA	3B
M4650B4V00	660 nm (red)	50 mW	<60 mA	3B
M4680B4V00	660 nm (red)	80 mW	<70 mA	3B
M4701B4V00	670 nm (dark red)	1 mW	<30 mA	2
M4703B4V00	670 nm (dark red)	3 mW	<40 mA	3R
M4705B4V00	670 nm (dark red)	5 mW	<40 mA	3R

The lasers comply with the CEI EN 60825-1 standard, CEI 76-2 classification.

Note

For better use you have to specify the focus distance. If not specified, emitter is focused for mm 2000 .Other optical projections available on request

Laser beam emitter LT1S20 series



Type of projection: Dot

Supply voltage: 9-36 Vdc 10-30 Vac

Connection: Cable 2x0,25 cm 200

Light source: Laser diode

Casing: Green anod.alum.

Dimension: 20x130 mm

Protection class: IP67

Storage temperature °C/°F: -40 +85 °C / -40 +185 °F

Operating temperature °C/°F: -10 +50 °C / 14 +122 °F

Code	Wavelength	Max output power	Operating current	Laser class
M4301B2V00	635 nm (bright red)	1 mW	<30 mA	2
M4303B2V00	635 nm (bright red)	3 mW	<30 mA	3R
M4305B2V00	635 nm (bright red)	5 mW	<30 mA	3R
M4310B2V00	635 nm (bright red)	10 mW	<60 mA	3B
M4315B2V00	635 nm (bright red)	15 mW	<80 mA	3B
M4320B2V00	635 nm (bright red)	20 mW	<80 mA	3B
M4330B2V00	635 nm (bright red)	30 mW	<110 mA	3B
M4501B2V00	650 nm (red)	1 mW	<30 mA	2
M4503B2V00	650 nm (red)	3 mW	<30 mA	3R
M4505B2V00	650 nm (red)	5 mW	<30 mA	3R
M4701B2V00	670 nm (dark red)	1 mW	<30 mA	2
M4703B2V00	670 nm (dark red)	3 mW	<40 mA	3R
M4705B2V00	670 nm (dark red)	5 mW	<40 mA	3R

The lasers comply with the CEI EN 60825-1 standard, CEI 76-2 classification.

Note

For better use you have to specify the focus distance. If not specified, emitter is focused for mm 2000 .Other optical projections available on request

Laser beam emitter LT1S20/XG series



Type of projection: Cross

Supply voltage: 9-36 Vdc 10-30 Vac

Connection: Cable 2x0,25 cm 200

Light source: Laser diode

Casing: Green anod.alum.

Dimension: 20x130 mm

Protection class: IP67

Storage temperature °C/°F: -40 +85 °C / -40 +185 °F

Operating temperature °C/°F: -10 +50 °C / 14 +122 °F

Code	Wavelength	Max output power	Operating current	Laser class
M4301B2VX0	635 nm (bright red)	1 mW	<30 mA	2
M4303B2VX0	635 nm (bright red)	3 mW	<30 mA	2M
M4305B2VX0	635 nm (bright red)	5 mW	<30 mA	2M
M4310B2VX0	635 nm (bright red)	10 mW	<60 mA	2M
M4315B2VX0	635 nm (bright red)	15 mW	<80 mA	2M
M4320B2VX0	635 nm (bright red)	20 mW	<80 mA	2M
M4330B2VX0	635 nm (bright red)	30 mW	<110 mA	2M
M4501B2VX0	650 nm (red)	1 mW	<30 mA	2
M4503B2VX0	650 nm (red)	3 mW	<30 mA	2M
M4505B2VX0	650 nm (red)	5 mW	<30 mA	2M
M4701B2VX0	670 nm (dark red)	1 mW	<30 mA	2
M4703B2VX0	670 nm (dark red)	3 mW	<40 mA	2M
M4705B2VX0	670 nm (dark red)	5 mW	<40 mA	2M

The lasers comply with the CEI EN 60825-1 standard, CEI 76-2 classification.

Note

For better use you have to specify the focus distance. If not specified, emitter is focused for mm 2000. The cross (spread 10°) has a total wide of mm 160 at a distance of mm 1000 from the emission point, perpendicularly to laser beam. Cross lenses with spread 2°, 5°, 10°, 25°, 30°, 45°, 75° available. .Other optical projections available on request

Laser beam emitter LT1S20/XG series



Type of projection: Cross

Supply voltage: 9-36 Vdc 10-30 Vac

Connection: M12 connector + cm 500 cable

Light source: Laser diode

Casing: Green anod.alum.

Dimension: 20x145 mm

Protection class: IP67

Storage temperature °C/°F: -40 +85 °C / -40 +185 °F

Operating temperature °C/°F: -10 +50 °C / 14 +122 °F

Code	Wavelength	Max output power	Operating current	Laser class
M4301B4VX0	635 nm (bright red)	1 mW	<30 mA	2
M4303B4VX0	635 nm (bright red)	3 mW	<30 mA	2M
M4305B4VX0	635 nm (bright red)	5 mW	<30 mA	2M
M4310B4VX0	635 nm (bright red)	10 mW	<60 mA	2M
M4315B4VX0	635 nm (bright red)	15 mW	<80 mA	2M
M4320B4VX0	635 nm (bright red)	20 mW	<80 mA	2M
M4330B4VX0	635 nm (bright red)	30 mW	<110 mA	2M
M4501B4VX0	650 nm (red)	1 mW	<30 mA	2
M4503B4VX0	650 nm (red)	3 mW	<30 mA	2M
M4505B4VX0	650 nm (red)	5 mW	<30 mA	2M
M4601B4VX0	660 nm (red)	1 mW	<30 mA	2
M4603B4VX0	660 nm (red)	3 mW	<30 mA	2M
M4605B4VX0	660 nm (red)	5 mW	<40 mA	2M
M4610B4VX0	660 nm (red)	10 mW	<40 mA	2M
M4620B4VX0	660 nm (red)	20 mW	<50 mA	2M
M4630B4VX0	660 nm (red)	30 mW	<50 mA	2M
M4640B4VX0	660 nm (red)	40 mW	<60 mA	3B
M4650B4VX0	660 nm (red)	50 mW	<60 mA	3B
M4680B4VX0	660 nm (red)	80 mW	<70 mA	3B
M4701B4VX0	670 nm (dark red)	1 mW	<30 mA	2
M4703B4VX0	670 nm (dark red)	3 mW	<40 mA	2M
M4705B4VX0	670 nm (dark red)	5 mW	<40 mA	2M

The lasers comply with the CEI EN 60825-1 standard, CEI 76-2 classification.

Note

For better use you have to specify the focus distance. If not specified, emitter is focused for mm 2000. The cross (spread 10°) has a total wide of mm 160 at a distance of mm 1000 from the emission point, perpendicularly to laser beam. Cross lenses with spread 2°, 5°, 10°, 25°, 30°, 45°, 75° available. .Other optical projections available on request

Laser beam emitter LT1S20/XG series



Type of projection: Cross

Supply voltage: 9-36 Vdc 10-30 Vac Trigger 5-30Vdc

Connection: M12 connector + cm 500 cable

Light source: Laser diode

Casing: Green anod.alum.

Dimension: 20x145 mm

Protection class: IP67

Storage temperature °C/°F: -40 +85 °C / -40 +185 °F

Operating temperature °C/°F: -10 +50 °C / 14 +122 °F

Code	Wavelength	Max output power	Operating current	Laser class
M4301L4VX0	635 nm (bright red)	1 mW	<40 mA	2
M4303L4VX0	635 nm (bright red)	3 mW	<40 mA	2M
M4305L4VX0	635 nm (bright red)	5 mW	<30 mA	2M
M4310L4VX0	635 nm (bright red)	10 mW	<60 mA	2M
M4315L4VX0	635 nm (bright red)	15 mW	<80 mA	2M
M4320L4VX0	635 nm (bright red)	20 mW	<80 mA	2M
M4330L4VX0	635 nm (bright red)	30 mW	<110 mA	2M
M4340L4VX0	635 nm (bright red)	40 mW	<110 mA	3B
M4350L4VX0	635 nm (bright red)	50 mW	<120 mA	3B
M4601L4VX0	660 nm (red)	1 mW	<30 mA	2
M4603L4VX0	660 nm (red)	3 mW	<30 mA	2M
M4605L4VX0	660 nm (red)	5 mW	<40 mA	2M
M4610L4VX0	660 nm (red)	10 mW	<40 mA	2M
M4620L4VX0	660 nm (red)	20 mW	<50 mA	2M
M4630L4VX0	660 nm (red)	30 mW	<50 mA	2M
M4640L4VX0	660 nm (red)	40 mW	<60 mA	3B
M4650L4VX0	660 nm (red)	50 mW	<60 mA	3B
M4680L4VX0	660 nm (red)	80 mW	<70 mA	3B

The lasers comply with the CEI EN 60825-1 standard, CEI 76-2 classification.

Note

For better use you have to specify the focus distance. If not specified, emitter is focused for mm 2000. The cross (spread 10°) has a total wide of mm 160 at a distance of mm 1000 from the emission point, perpendicularly to laser beam. Cross lenses with spread 2°, 5°, 10°, 25°, 30°, 45°, 75° available. .Other optical projections available on request

Laser beam emitter LT1S20/XG series



Type of projection: Cross

Supply voltage: 5 Vdc

Connection: Cable 2x0,25 cm 200

Light source: Laser diode

Casing: Green anod.alum.

Dimension: 20x130 mm

Protection class: IP67

Storage temperature °C/°F: -40 +85 °C / -40 +185 °F

Operating temperature °C/°F: -10 +50 °C / 14 +122 °F

Code	Wavelength	Max output power	Operating current	Laser class
M4301A2VX0	635 nm (bright red)	1 mW	<40 mA	2
M4303A2VX0	635 nm (bright red)	3 mW	<40 mA	2M
M4305A2VX0	635 nm (bright red)	5 mW	<40 mA	2M
M4310A2VX0	635 nm (bright red)	10 mW	<70 mA	2M
M4315A2VX0	635 nm (bright red)	15 mW	<90 mA	2M
M4320A2VX0	635 nm (bright red)	20 mW	<90 mA	2M
M4330A2VX0	635 nm (bright red)	30 mW	<120 mA	2M
M4501A2VX0	650 nm (red)	1 mW	<40 mA	2
M4503A2VX0	650 nm (red)	3 mW	<40 mA	2M
M4505A2VX0	650 nm (red)	5 mW	<40 mA	2M
M4701A2VX0	670 nm (dark red)	1 mW	<50 mA	2
M4703A2VX0	670 nm (dark red)	3 mW	<60 mA	2M
M4705A2VX0	670 nm (dark red)	5 mW	<65 mA	2M

The lasers comply with the CEI EN 60825-1 standard, CEI 76-2 classification.

Note

For better use you have to specify the focus distance. If not specified, emitter is focused for mm 2000. The cross (spread 10°) has a total wide of mm 160 at a distance of mm 1000 from the emission point, perpendicularly to laser beam. Cross lenses with spread 2°, 5°, 10°, 25°, 30°, 45°, 75° available. .Other optical projections available on request

Laser beam emitter LT1S20/XG series



Type of projection: Cross

Supply voltage: 5 Vdc

Connection: M12 connector + cm 500 cable

Light source: Laser diode

Casing: Green anod.alum.

Dimension: 20x145 mm

Protection class: IP67

Storage temperature °C/°F: -40 +85 °C / -40 +185 °F

Operating temperature °C/°F: -10 +50 °C / 14 +122 °F

Code	Wavelength	Max output power	Operating current	Laser class
M4301A4VX0	635 nm (bright red)	1 mW	<40 mA	2
M4303A4VX0	635 nm (bright red)	3 mW	<40 mA	2M
M4305A4VX0	635 nm (bright red)	5 mW	<40 mA	2M
M4310A4VX0	635 nm (bright red)	10 mW	<70 mA	2M
M4315A4VX0	635 nm (bright red)	15 mW	<90 mA	2M
M4320A4VX0	635 nm (bright red)	20 mW	<90 mA	2M
M4330A4VX0	635 nm (bright red)	30 mW	<120 mA	2M
M4501A4VX0	650 nm (red)	1 mW	<40 mA	2
M4503A4VX0	650 nm (red)	3 mW	<40 mA	2M
M4505A4VX0	650 nm (red)	5 mW	<40 mA	2M
M4701A4VX0	670 nm (dark red)	1 mW	<50 mA	2
M4703A4VX0	670 nm (dark red)	3 mW	<60 mA	2M
M4705A4VX0	670 nm (dark red)	5 mW	<65 mA	2M

The lasers comply with the CEI EN 60825-1 standard, CEI 76-2 classification.

Note

For better use you have to specify the focus distance. If not specified, emitter is focused for mm 2000. The cross (spread 10°) has a total wide of mm 160 at a distance of mm 1000 from the emission point, perpendicularly to laser beam. Cross lenses with spread 2°, 5°, 10°, 25°, 30°, 45°, 75° available. .Other optical projections available on request

Laser beam emitter LT1S20/CG series



Type of projection: Circle

Supply voltage: 5 Vdc

Connection: Cable 2x0,25 cm 200

Light source: Laser diode

Casing: Green anod.alum.

Dimension: 20x130 mm

Protection class: IP67

Storage temperature °C/°F: -40 +85 °C / -40 +185 °F

Operating temperature °C/°F: -10 +50 °C / 14 +122 °F

Code	Wavelength	Max output power	Operating current	Laser class
M4301A2VC0	635 nm (bright red)	1 mW	<40 mA	2
M4303A2VC0	635 nm (bright red)	3 mW	<40 mA	2M
M4305A2VC0	635 nm (bright red)	5 mW	<40 mA	2M
M4310A2VC0	635 nm (bright red)	10 mW	<70 mA	2M
M4315A2VC0	635 nm (bright red)	15 mW	<90 mA	2M
M4320A2VC0	635 nm (bright red)	20 mW	<90 mA	2M
M4330A2VC0	635 nm (bright red)	30 mW	<120 mA	2M
M4501A2VC0	650 nm (red)	1 mW	<40 mA	2
M4503A2VC0	650 nm (red)	3 mW	<40 mA	2M
M4505A2VC0	650 nm (red)	5 mW	<40 mA	2M
M4701A2VC0	670 nm (dark red)	1 mW	<50 mA	2
M4703A2VC0	670 nm (dark red)	3 mW	<60 mA	2M
M4705A2VC0	670 nm (dark red)	5 mW	<65 mA	2M

The lasers comply with the CEI EN 60825-1 standard, CEI 76-2 classification.

Note

For better use you have to specify the focus distance. If not specified, emitter is focused for mm 2000. The circle (spread 3°) has a central dot and a diameter of mm 40 at a distance of mm 1000 from the emission point. Circle lenses with spread 3°, 4°, 34°, 45° available. .Other optical projections available on request

Laser beam emitter LT1S20/CG series



Type of projection: Circle

Supply voltage: 5 Vdc

Connection: M12 connector + cm 500 cable

Light source: Laser diode

Casing: Green anod.alum.

Dimension: 20x145 mm

Protection class: IP67

Storage temperature °C/°F: -40 +85 °C / -40 +185 °F

Operating temperature °C/°F: -10 +50 °C / 14 +122 °F

Code	Wavelength	Max output power	Operating current	Laser class
M4301A4VC0	635 nm (bright red)	1 mW	<40 mA	2
M4303A4VC0	635 nm (bright red)	3 mW	<40 mA	2M
M4305A4VC0	635 nm (bright red)	5 mW	<40 mA	2M
M4310A4VC0	635 nm (bright red)	10 mW	<70 mA	2M
M4315A4VC0	635 nm (bright red)	15 mW	<90 mA	2M
M4320A4VC0	635 nm (bright red)	20 mW	<90 mA	2M
M4330A4VC0	635 nm (bright red)	30 mW	<120 mA	2M
M4501A4VC0	650 nm (red)	1 mW	<40 mA	2
M4503A4VC0	650 nm (red)	3 mW	<40 mA	2M
M4505A4VC0	650 nm (red)	5 mW	<40 mA	2M
M4701A4VC0	670 nm (dark red)	1 mW	<50 mA	2
M4703A4VC0	670 nm (dark red)	3 mW	<60 mA	2M
M4705A4VC0	670 nm (dark red)	5 mW	<65 mA	2M

The lasers comply with the CEI EN 60825-1 standard, CEI 76-2 classification.

Note

For better use you have to specify the focus distance. If not specified, emitter is focused for mm 2000. The circle (spread 3°) has a central dot and a diameter of mm 40 at a distance of mm 1000 from the emission point. Circle lenses with spread 3°, 4°, 34°, 45° available. .Other optical projections available on request

Laser beam emitter LT1S20/CG series



Type of projection: Circle

Supply voltage: 9-36 Vdc 10-30 Vac Trigger 5-30Vdc

Connection: M12 connector + cm 500 cable

Light source: Laser diode

Casing: Green anod.alum.

Dimension: 20x145 mm

Protection class: IP67

Storage temperature °C/°F: -40 +85 °C / -40 +185 °F

Operating temperature °C/°F: -10 +50 °C / 14 +122 °F

Code	Wavelength	Max output power	Operating current	Laser class
M4301L4VC0	635 nm (bright red)	1 mW	<40 mA	2
M4303L4VC0	635 nm (bright red)	3 mW	<40 mA	2M
M4305L4VC0	635 nm (bright red)	5 mW	<30 mA	2M
M4310L4VC0	635 nm (bright red)	10 mW	<60 mA	2M
M4315L4VC0	635 nm (bright red)	15 mW	<80 mA	2M
M4320L4VC0	635 nm (bright red)	20 mW	<80 mA	2M
M4330L4VC0	635 nm (bright red)	30 mW	<110 mA	2M
M4340L4VC0	635 nm (bright red)	40 mW	<110 mA	3B
M4350L4VC0	635 nm (bright red)	50 mW	<120 mA	3B
M4601L4VC0	660 nm (red)	1 mW	<30 mA	2
M4603L4VC0	660 nm (red)	3 mW	<30 mA	2M
M4605L4VC0	660 nm (red)	5 mW	<40 mA	2M
M4610L4VC0	660 nm (red)	10 mW	<40 mA	2M
M4620L4VC0	660 nm (red)	20 mW	<50 mA	2M
M4630L4VC0	660 nm (red)	30 mW	<50 mA	2M
M4640L4VC0	660 nm (red)	40 mW	<60 mA	3B
M4650L4VC0	660 nm (red)	50 mW	<60 mA	3B
M4680L4VC0	660 nm (red)	80 mW	<70 mA	3B

The lasers comply with the CEI EN 60825-1 standard, CEI 76-2 classification.

Note

For better use you have to specify the focus distance. If not specified, emitter is focused for mm 2000. The circle (spread 3°) has a central dot and a diameter of mm 40 at a distance of mm 1000 from the emission point. Circle lenses with spread 3°, 4°, 34°, 45° available. .Other optical projections available on request

Laser beam emitter LT1S20/CG series



Type of projection: Circle

Supply voltage: 9-36 Vdc 10-30 Vac

Connection: M12 connector + cm 500 cable

Light source: Laser diode

Casing: Green anod.alum.

Dimension: 20x145 mm

Protection class: IP67

Storage temperature °C/°F: -40 +85 °C / -40 +185 °F

Operating temperature °C/°F: -10 +50 °C / 14 +122 °F

Code	Wavelength	Max output power	Operating current	Laser class
M4301B4VC0	635 nm (bright red)	1 mW	<30 mA	2
M4303B4VC0	635 nm (bright red)	3 mW	<30 mA	2M
M4305B4VC0	635 nm (bright red)	5 mW	<30 mA	2M
M4310B4VC0	635 nm (bright red)	10 mW	<60 mA	2M
M4315B4VC0	635 nm (bright red)	15 mW	<80 mA	2M
M4320B4VC0	635 nm (bright red)	20 mW	<80 mA	2M
M4330B4VC0	635 nm (bright red)	30 mW	<110 mA	2M
M4501B4VC0	650 nm (red)	1 mW	<30 mA	2
M4503B4VC0	650 nm (red)	3 mW	<30 mA	2M
M4505B4VC0	650 nm (red)	5 mW	<30 mA	2M
M4601B4VC0	660 nm (red)	1 mW	<30 mA	2
M4603B4VC0	660 nm (red)	3 mW	<30 mA	2M
M4605B4VC0	660 nm (red)	5 mW	<40 mA	2M
M4610B4VC0	660 nm (red)	10 mW	<40 mA	2M
M4620B4VC0	660 nm (red)	20 mW	<50 mA	2M
M4630B4VC0	660 nm (red)	30 mW	<50 mA	2M
M4640B4VC0	660 nm (red)	40 mW	<60 mA	3B
M4650B4VC0	660 nm (red)	50 mW	<60 mA	3B
M4680B4VC0	660 nm (red)	80 mW	<70 mA	3B
M4701B4VC0	670 nm (dark red)	1 mW	<30 mA	2
M4703B4VC0	670 nm (dark red)	3 mW	<40 mA	2M
M4705B4VC0	670 nm (dark red)	5 mW	<40 mA	2M

The lasers comply with the CEI EN 60825-1 standard, CEI 76-2 classification.

Note

For better use you have to specify the focus distance. If not specified, emitter is focused for mm 2000. The circle (spread 3°) has a central dot and a diameter of mm 40 at a distance of mm 1000 from the emission point. Circle lenses with spread 3°, 4°, 34°, 45° available. .Other optical projections available on request

Laser beam emitter LT1S20/CG series



Type of projection: Circle

Supply voltage: 9-36 Vdc 10-30 Vac

Connection: Cable 2x0,25 cm 200

Light source: Laser diode

Casing: Green anod.alum.

Dimension: 20x130 mm

Protection class: IP67

Storage temperature °C/°F: -40 +85 °C / -40 +185 °F

Operating temperature °C/°F: -10 +50 °C / 14 +122 °F

Code	Wavelength	Max output power	Operating current	Laser class
M4301B2VC0	635 nm (bright red)	1 mW	<30 mA	2
M4303B2VC0	635 nm (bright red)	3 mW	<30 mA	2M
M4305B2VC0	635 nm (bright red)	5 mW	<30 mA	2M
M4310B2VC0	635 nm (bright red)	10 mW	<60 mA	2M
M4315B2VC0	635 nm (bright red)	15 mW	<80 mA	2M
M4320B2VC0	635 nm (bright red)	20 mW	<80 mA	2M
M4330B2VC0	635 nm (bright red)	30 mW	<110 mA	2M
M4501B2VC0	650 nm (red)	1 mW	<30 mA	2
M4503B2VC0	650 nm (red)	3 mW	<30 mA	2M
M4505B2VC0	650 nm (red)	5 mW	<30 mA	2M
M4701B2VC0	670 nm (dark red)	1 mW	<30 mA	2
M4703B2VC0	670 nm (dark red)	3 mW	<40 mA	2M
M4705B2VC0	670 nm (dark red)	5 mW	<40 mA	2M

The lasers comply with the CEI EN 60825-1 standard, CEI 76-2 classification.

Note

For better use you have to specify the focus distance. If not specified, emitter is focused for mm 2000. The circle (spread 3°) has a central dot and a diameter of mm 40 at a distance of mm 1000 from the emission point. Circle lenses with spread 3°, 4°, 34°, 45° available. .Other optical projections available on request

Cutting guide line laser LT1S20/LG series



Type of projection: Line

Supply voltage: 9-36 Vdc 10-30 Vac Trigger 5-30Vdc

Connection: M12 connector + cm 500 cable

Light source: Laser diode

Casing: Green anod.alum.

Dimension: 20x145 mm

Protection class: IP67

Storage temperature °C/°F: -40 +85 °C / -40 +185 °F

Operating temperature °C/°F: -10 +50 °C / 14 +122 °F

Code	Wavelength	Max output power	Linelength	Operating current	Laser class
M4301L4VL0	635 nm (bright red)	1 mW	Max 1,5mt	<40 mA	2
M4303L4VL0	635 nm (bright red)	3 mW	Max 2mt	<40 mA	2M
M4305L4VL0	635 nm (bright red)	5 mW	Max 2,5mt	<30 mA	2M
M4310L4VL0	635 nm (bright red)	10 mW	Max 5mt	<60 mA	2M
M4315L4VL0	635 nm (bright red)	15 mW	Max 6mt	<80 mA	2M
M4320L4VL0	635 nm (bright red)	20 mW	Max 7mt	<80 mA	2M
M4330L4VL0	635 nm (bright red)	30 mW	Max 9mt	<110 mA	2M
M4340L4VL0	635 nm (bright red)	40 mW	Max 10mt	<110 mA	3B
M4350L4VL0	635 nm (bright red)	50 mW	Max 11mt	<120 mA	3B
M4601L4VL0	660 nm (red)	1 mW	Max 1mt	<30 mA	2
M4603L4VL0	660 nm (red)	3 mW	Max 1mt	<30 mA	2M
M4605L4VL0	660 nm (red)	5 mW	Max 1,5mt	<40 mA	2M
M4610L4VL0	660 nm (red)	10 mW	Max 4mt	<40 mA	2M
M4620L4VL0	660 nm (red)	20 mW	Max 6mt	<50 mA	2M
M4630L4VL0	660 nm (red)	30 mW	Max 8mt	<50 mA	2M
M4640L4VL0	660 nm (red)	40 mW	Max 9mt	<60 mA	3B
M4650L4VL0	660 nm (red)	50 mW	Max 10mt	<60 mA	3B
M4680L4VL0	660 nm (red)	80 mW	Max 12mt	<70 mA	3B

The lasers comply with the CEI EN 60825-1 standard, CEI 76-2 classification.

Note

For better use you have to specify the focus distance. If not specified, emitter is focused for infinity. Line lenses with spread 5°, 20°, 30°, 45°, 90° available. The line has a wide, at a distance of mm 1000 from the emission point and perpendicularly to laser beam, as it follows: 05° spread = mm 70 ; 20° spread = mm 310 ; 30° spread = mm 660 ; 45° spread = 800mm; 90° spread = mm 1800. You have to specify the spread that you wish. If not specified, emitter is shipped with a 90° spread lens. The visibility and the length of the line depend on the mounting of the

laser and the brightness of the environment. Other optical projections available on request

Cutting guide line laser LT1S20/LG series



Type of projection: Line

Supply voltage: 9-36 Vdc 10-30 Vac

Connection: M12 connector + cm 500 cable

Light source: Laser diode

Casing: Green anod.alum.

Dimension: 20x145 mm

Protection class: IP67

Storage temperature °C/°F: -40 +85 °C / -40 +185 °F

Operating temperature °C/°F: -10 +50 °C / 14 +122 °F

Code	Wavelength	Max output power	Linelength	Operating current	Laser class
M4301B4VL0	635 nm (bright red)	1 mW	Max 1,5mt	<30 mA	2
M4303B4VL0	635 nm (bright red)	3 mW	Max 2mt	<30 mA	2M
M4305B4VL0	635 nm (bright red)	5 mW	Max 2,5mt	<30 mA	2M
M4310B4VL0	635 nm (bright red)	10 mW	Max 5mt	<60 mA	2M
M4315B4VL0	635 nm (bright red)	15 mW	Max 6mt	<80 mA	2M
M4320B4VL0	635 nm (bright red)	20 mW	Max 7mt	<80 mA	2M
M4330B4VL0	635 nm (bright red)	30 mW	Max 9mt	<110 mA	2M
M4501B4VL0	650 nm (red)	1 mW	Max 1mt	<30 mA	2
M4503B4VL0	650 nm (red)	3 mW	Max 1,5mt	<30 mA	2M
M4505B4VL0	650 nm (red)	5 mW	Max 2mt	<30 mA	2M
M4601B4VL0	660 nm (red)	1 mW	Max 1mt	<30 mA	2
M4603B4VL0	660 nm (red)	3 mW	Max 1mt	<30 mA	2M
M4605B4VL0	660 nm (red)	5 mW	Max 1,5mt	<40 mA	2M
M4610B4VL0	660 nm (red)	10 mW	Max 4mt	<40 mA	2M
M4620B4VL0	660 nm (red)	20 mW	Max 6mt	<50 mA	2M
M4630B4VL0	660 nm (red)	30 mW	Max 8mt	<50 mA	2M
M4640B4VL0	660 nm (red)	40 mW	Max 9mt	<60 mA	3B
M4650B4VL0	660 nm (red)	50 mW	Max 10mt	<60 mA	3B
M4680B4VL0	660 nm (red)	80 mW	Max 12mt	<70 mA	3B
M4701B4VL0	670 nm (dark red)	1 mW	Max 1mt	<30 mA	2
M4703B4VL0	670 nm (dark red)	3 mW	Max 1,2mt	<40 mA	2M
M4705B4VL0	670 nm (dark red)	5 mW	Max 1,5mt	<40 mA	2M

The lasers comply with the CEI EN 60825-1 standard, CEI 76-2 classification.

Note

For better use you have to specify the focus distance. If not specified, emitter is focused for infinity. Line lenses with spread 5°, 20°, 30°, 45°, 90° available. The line has a wide, at a distance of mm 1000 from the emission point and perpendicularly to laser beam, as it follows: 05° spread = mm 70 ; 20° spread = mm 310 ; 30° spread = mm 660 ; 45° spread = 800mm; 90° spread = mm 1800. You have to specify the spread that you wish. If not specified, emitter is shipped with a 90° spread lens. The visibility and the length of the line depend on the mounting of the laser and the brightness of the environment. Other optical projections available on request

Cutting guide line laser LT1S20/LG series



Type of projection: Line

Supply voltage: 9-36 Vdc 10-30 Vac

Connection: Cable 2x0,25 cm 200

Light source: Laser diode

Casing: Green anod.alum.

Dimension: 20x130 mm

Protection class: IP67

Storage temperature °C/°F: -40 +85 °C / -40 +185 °F

Operating temperature °C/°F: -10 +50 °C / 14 +122 °F

Code	Wavelength	Max output power	Linelength	Operating current	Laser class
M4301B2VL0	635 nm (bright red)	1 mW	Max 1,5mt	<30 mA	2
M4303B2VL0	635 nm (bright red)	3 mW	Max 2mt	<30 mA	2M
M4305B2VL0	635 nm (bright red)	5 mW	Max 2,5mt	<30 mA	2M
M4310B2VL0	635 nm (bright red)	10 mW	Max 5mt	<60 mA	2M
M4315B2VL0	635 nm (bright red)	15 mW	Max 6mt	<80 mA	2M
M4320B2VL0	635 nm (bright red)	20 mW	Max 7mt	<80 mA	2M
M4330B2VL0	635 nm (bright red)	30 mW	Max 9mt	<110 mA	2M
M4501B2VL0	650 nm (red)	1 mW	Max 1mt	<30 mA	2
M4503B2VL0	650 nm (red)	3 mW	Max 1,5mt	<30 mA	2M
M4505B2VL0	650 nm (red)	5 mW	Max 2mt	<30 mA	2M
M4701B2VL0	670 nm (dark red)	1 mW	Max 1mt	<30 mA	2
M4703B2VL0	670 nm (dark red)	3 mW	Max 1,2mt	<40 mA	2M
M4705B2VL0	670 nm (dark red)	5 mW	Max 1,5mt	<40 mA	2M

The lasers comply with the CEI EN 60825-1 standard, CEI 76-2 classification.

Note

For better use you have to specify the focus distance. If not specified, emitter is focused for infinity. Line lenses with spread 5°, 20°, 30°, 45°, 90° available. The line has a wide, at a distance of mm 1000 from the emission point and perpendicularly to laser beam, as it follows: 05° spread = mm 70 ; 20° spread = mm 310 ; 30° spread = mm 660 ; 45° spread = 800mm; 90° spread = mm 1800. You have to specify the spread that you wish. If not specified, emitter is shipped with a 90° spread lens. The visibility and the lenght of the line depend on the mounting of the laser and the brightness of the enviroment. Other optical projections available on request

Cutting guide line laser LT1S20/LG series



Type of projection: Line

Supply voltage: 5 Vdc

Connection: Cable 2x0,25 cm 200

Light source: Laser diode

Casing: Green anod.alum.

Dimension: 20x130 mm

Protection class: IP67

Storage temperature °C/°F: -40 +85 °C / -40 +185 °F

Operating temperature °C/°F: -10 +50 °C / 14 +122 °F

Code	Wavelength	Max output power	Linelength	Operating current	Laser class
M4301A2VL0	635 nm (bright red)	1 mW	Max 1,5mt	<40 mA	2
M4303A2VL0	635 nm (bright red)	3 mW	Max 2mt	<40 mA	2M
M4305A2VL0	635 nm (bright red)	5 mW	Max 2,5mt	<40 mA	2M
M4310A2VL0	635 nm (bright red)	10 mW	Max 5mt	<70 mA	2M
M4315A2VL0	635 nm (bright red)	15 mW	Max 6mt	<90 mA	2M
M4320A2VL0	635 nm (bright red)	20 mW	Max 7mt	<90 mA	2M
M4330A2VL0	635 nm (bright red)	30 mW	Max 9mt	<120 mA	2M
M4501A2VL0	650 nm (red)	1 mW	Max 1mt	<40 mA	2
M4503A2VL0	650 nm (red)	3 mW	Max 1,5mt	<40 mA	2M
M4505A2VL0	650 nm (red)	5 mW	Max 2mt	<40 mA	2M
M4701A2VL0	670 nm (dark red)	1 mW	Max 1mt	<50 mA	2
M4703A2VL0	670 nm (dark red)	3 mW	Max 1,2mt	<60 mA	2M
M4705A2VL0	670 nm (dark red)	5 mW	Max 1,5mt	<65 mA	2M

The lasers comply with the CEI EN 60825-1 standard, CEI 76-2 classification.

Note

For better use you have to specify the focus distance. If not specified, emitter is focused for infinity. Line lenses with spread 5°, 20°, 30°, 45°, 90° available. The line has a wide, at a distance of mm 1000 from the emission point and perpendicularly to laser beam, as it follows: 05° spread = mm 70 ; 20° spread = mm 310 ; 30° spread = mm 660 ; 45° spread = 800mm; 90° spread = mm 1800. You have to specify the spread that you wish. If not specified, emitter is shipped with a 90° spread lens. The visibility and the lenght of the line depend on the mounting of the laser and the brightness of the enviroment. Other optical projections available on request

Cutting guide line laser LT1S20/LG series



Type of projection: Line

Supply voltage: 5 Vdc

Connection: M12 connector + cm 500 cable

Light source: Laser diode

Casing: Green anod.alum.

Dimension: 20x145 mm

Protection class: IP67

Storage temperature °C/°F: -40 +85 °C / -40 +185 °F

Operating temperature °C/°F: -10 +50 °C / 14 +122 °F

Code	Wavelength	Max output power	Linelength	Operating current	Laser class
M4301A4VL0	635 nm (bright red)	1 mW	Max 1,5mt	<40 mA	2
M4303A4VL0	635 nm (bright red)	3 mW	Max 2mt	<40 mA	2M
M4305A4VL0	635 nm (bright red)	5 mW	Max 2,5mt	<40 mA	2M
M4310A4VL0	635 nm (bright red)	10 mW	Max 5mt	<70 mA	2M
M4315A4VL0	635 nm (bright red)	15 mW	Max 6mt	<90 mA	2M
M4320A4VL0	635 nm (bright red)	20 mW	Max 7mt	<90 mA	2M
M4330A4VL0	635 nm (bright red)	30 mW	Max 9mt	<120 mA	2M
M4501A4VL0	650 nm (red)	1 mW	Max 1mt	<40 mA	2
M4503A4VL0	650 nm (red)	3 mW	Max 1,5mt	<40 mA	2M
M4505A4VL0	650 nm (red)	5 mW	Max 2mt	<40 mA	2M
M4701A4VL0	670 nm (dark red)	1 mW	Max 1mt	<50 mA	2
M4703A4VL0	670 nm (dark red)	3 mW	Max 1,2mt	<60 mA	2M
M4705A4VL0	670 nm (dark red)	5 mW	Max 1,5mt	<65 mA	2M

The lasers comply with the CEI EN 60825-1 standard, CEI 76-2 classification.

Note

For better use you have to specify the focus distance. If not specified, emitter is focused for infinity. Line lenses with spread 5°, 20°, 30°, 45°, 90° available. The line has a wide, at a distance of mm 1000 from the emission point and perpendicularly to laser beam, as it follows: 05° spread = mm 70 ; 20° spread = mm 310 ; 30° spread = mm 660 ; 45° spread = 800mm; 90° spread = mm 1800. You have to specify the spread that you wish. If not specified, emitter is shipped with a 90° spread lens. The visibility and the lenght of the line depend on the mounting of the laser and the brightness of the enviroment. Other optical projections available on request

Related accessories



9A0000601

Stabilized power supplier, input 80-30Vac-Vdc, output 5Vdc, 1A DIN attachment



9A0000701

Stabilized power supplier input 85-265Vac, output 5Vdc, 600mA, schuco plug



9A0000901

Stabilized power supplier input 100-240Vdc, output 5Vdc, 3A, DIN attachment



9PP2001N00

Dimming flap 20 mm diam, black



9SI2001N00

Reclining bracket for 20 mm diam module, black



9SA2002A00

Inox rod diam mm 20x295, side milled, fixing holes (to be used with brackets 9SM2001N00 - 9SM5001N00)



9SM2001N00

Horiz/vert twistable bracket for 20 mm diam module, black anod. alum., mountable on 20 mm diam rod



9SM2002N00

Adjustable bracket for 20 mm diam module, flat, black, 12 mm diam inox rod included



9PT2001B00

Protection for 20 mm diam module - white



Safety classes

CLASS 1

Laser Safety Classes Laser products that are safe in use, including direct and prolonged beam viewing, even when using telescopic optics. Class 1 laser devices, in the wavelength range between 400 nm and 700 nm, do not require any safety instruments or interlocks. For class 1 laser products, direct beam viewing may still cause temporary dazzling, especially in poorly lit environments.

CLASS 2

Laser products safe for momentary exposures. Eye protection is normally assured by natural aversion behaviour including blinking for a short exposure time (0.25s). Class 2 lasers may become hazardous in the event of direct and prolonged beam viewing. Class 2 laser devices, in the wavelength range between 400 nm and 700 nm, do not require any key switches or safety interlocks for operation. For class 2, unlike class 2M, the use of optical instruments does not increase the risk of eye injuries. Do not stare into the beam.

CLASS 2M

Normally safe laser products. Class 2M laser devices, in the wavelength range between 400 nm and 700 nm, do not require any key switches or safety devices for operation. Eye protection is normally assured by natural aversion behaviour including blinking for a short exposure time (0.25s). Direct viewing of class 2M laser devices using optics such as binoculars, telescopes, microscopes, etc. may be hazardous. Do not stare into the beam and/or view it using instruments.

CLASS 3R

The accessible radiation of class 3R laser products is potentially hazardous. Laser products that emit radiation which may exceed the MPE (maximum permissible exposure) under direct intrabeam viewing but the risk of injury is relatively low in most cases. Class 3R laser devices, in the wavelength range between 400 nm and 700 nm, do not require any key switches or safety devices for operation. Avoid direct eye exposure. Do not stare into the beam of optics (such as binoculars, telescopes, microscopes, etc.).

CLASS 3B

Laser products that are normally hazardous when directly viewing the beam (i.e. within the NOHD - Nominal Ocular Hazard Distance), including accidental short time exposure. Wear eye protection when directly viewing the beam. Viewing diffuse reflections is normally safe. The conditions for safely viewing diffuse reflections for class 3B lasers are: minimum viewing distance 13 cm for a maximum exposure time of 10 seconds. Every class 3B laser system must be fitted with a signalling device when the laser is in operation (The signalling device may be audible or visual).

LASERTECH[®]

— industrial laser pointers —

Lasertech | Agnolin e Brusadin SRL Via Mortalas, 15 Z.I. -
33080 Orcenico Inferiore Zoppola (PN)-ITALY Tel. +39 0434
977335 - info@lasertech.it - www.lasertech.it